

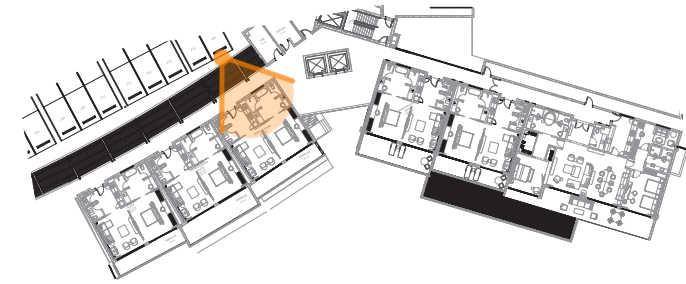
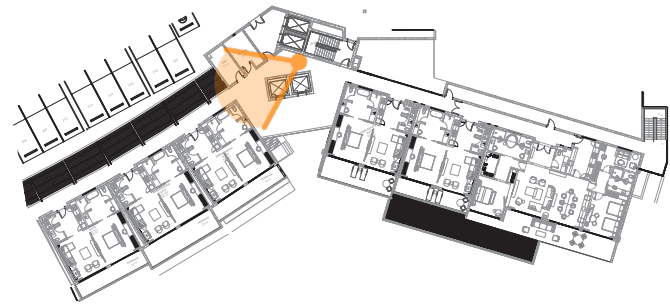
VIE L'VEN - SINT MAARTEN

GOVERNOR'S SUITE & CORRIDOR

SCHEMATIC DESIGN PRESENTATION UPDATED - MARCH 7, 2024

STUDIO
MUNGE





EXTERIOR CORRIDOR

TYPICAL SUITE ENTRY



..... ARCHITECTURE
STRUCTURE

..... TEXTURED STONE
FLOOR/BASE/ENTRY
FRAME

..... WHITE WASH OAK SUITE
ENTRY WITH REEDED
WOOD DETAIL

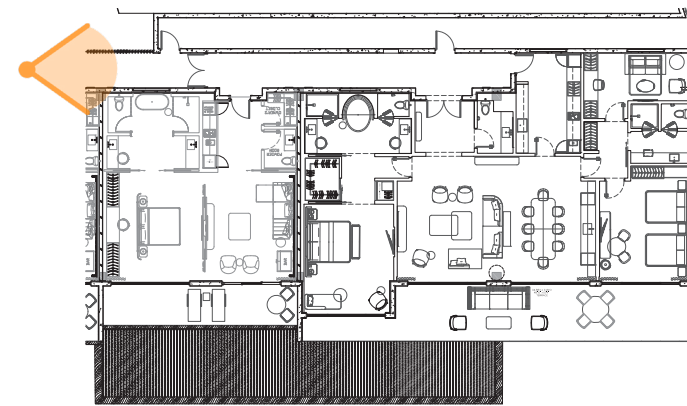
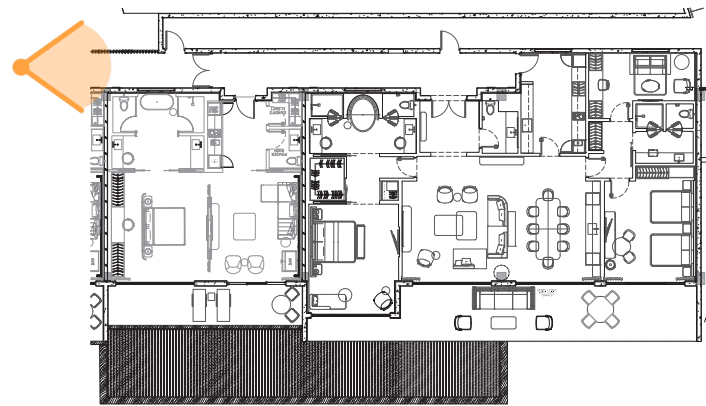
..... TEXTURED PLASTER WALLS
WITH REVEAL DETAIL

..... TEXTURED PLASTER WALLS
WITH REVEAL DETAIL

..... TEXTURED STONE
FLOOR/BASE/FRAME

..... WHITE WASH OAK SUITE ENTRY
WITH REEDED WOOD DETAIL

VIE L'VEN - SINT MAARTEN | GOVERNOR'S SUITE | INTERIOR CORRIDOR & GALLERY



INTERIOR CORRIDOR TO GOVERNOR'S/AMBADASSOR SUITE

INTERIOR CORRIDOR TO GOVERNOR'S/AMBADASSOR SUITE



TEXTURED PLASTER
WALLS WITH REVEAL DETAIL

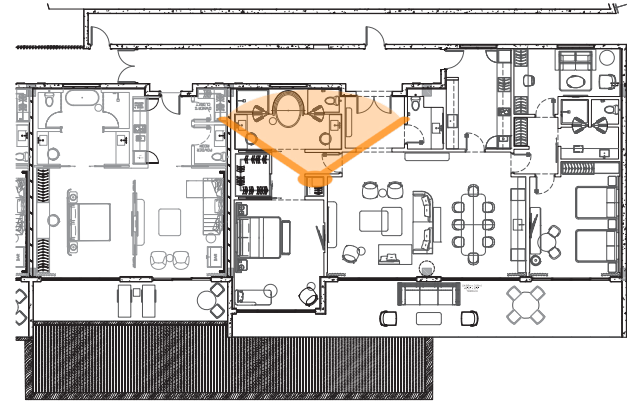
WHITE WASH OAK DOOR
WITH REEDED WOOD
DETAIL

TEXTURED STONE
FLOOR/BASE/FRAME

WHITE WASH OAK WALLS/DOORS
WITH REEDED WOOD
DETAIL

TEXTURED STONE
FLOOR & BASE

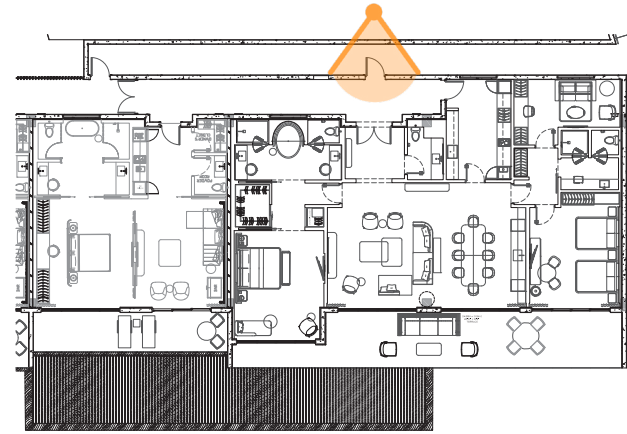
TEXTURED PLASTER WALLS
WITH REVEAL DETAIL



INTERIOR CORRIDOR SECTION



WHITE WASH OAK WALLS WITH REEDED WOOD DETAIL TEXTURED STONE FLOOR

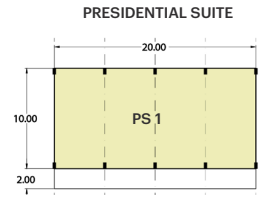


GOVERNOR'S SUITE ENTRY

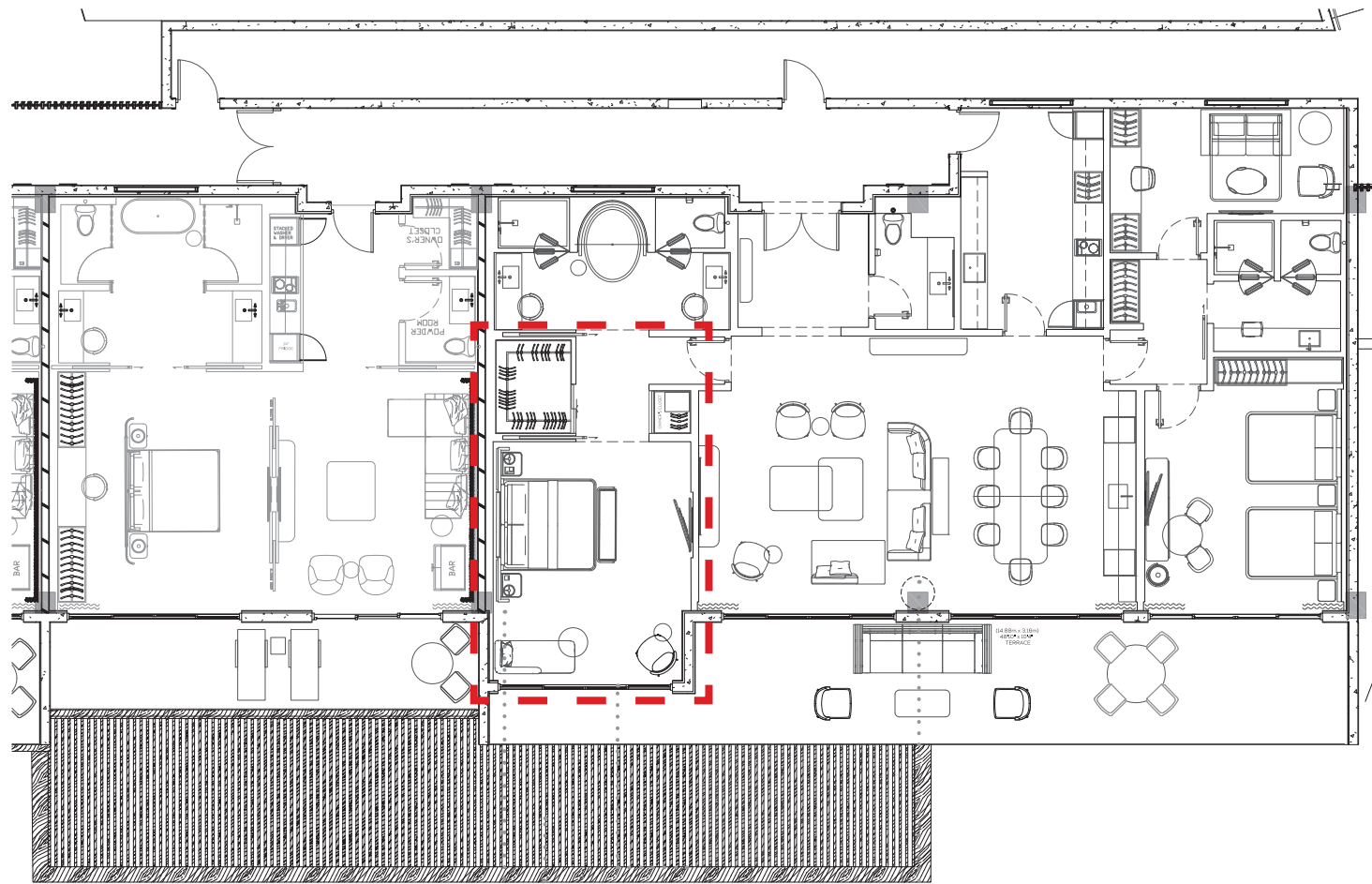


WHITE WASH OAK WALLS & DOORS
WITH REEDED WOOD DETAIL

TEXTURED STONE
FLOOR/BASE/FRAME



PLAN OPTION 1

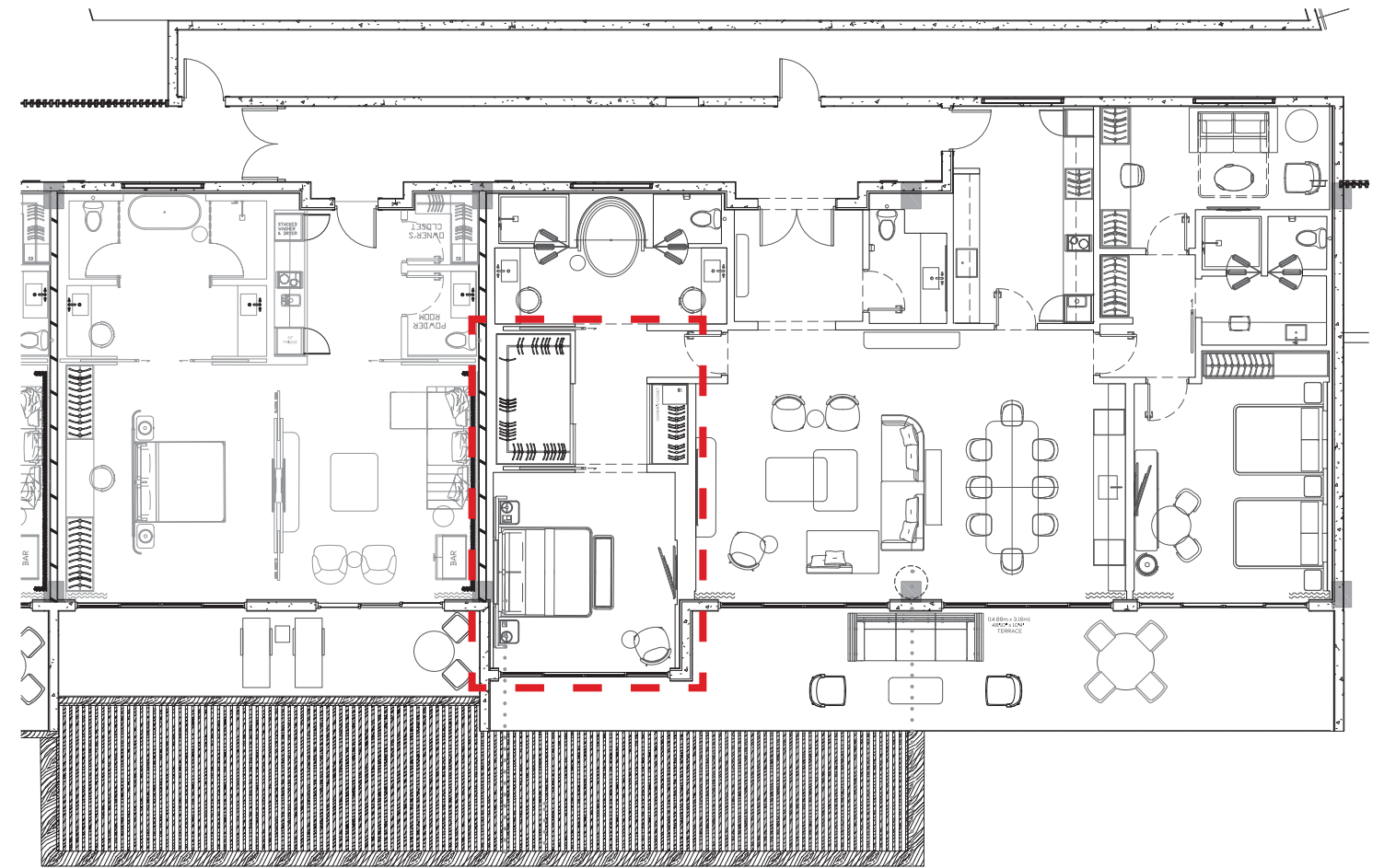


RENDERINGS REFLECT ROUND COLUMN AS PER ORIGINAL ARCH BACKGROUND. COLUMNS ARE SQUARE AS PER LATEST ARCH BACKGROUND. DESIGN INTENT TO REMAIN AS SHOWN.

PLAN REVISED AS PER LATEST ARCH BACKGROUND. BALCONY WINDOWS PUSHED FORWARD 1M DUE TO CODE.

OPT 1 - LARGER BEDROOM, SMALLER CLOSETS

PLAN OPTION 2



RENDERINGS REFLECT ROUND COLUMN AS PER ORIGINAL ARCH BACKGROUND. COLUMNS ARE SQUARE AS PER LATEST ARCH BACKGROUND. DESIGN INTENT TO REMAIN AS SHOWN.

PLAN REVISED AS PER LATEST ARCH BACKGROUND. BALCONY WINDOWS PUSHED FORWARD 1M DUE TO CODE.

OPT 1 - LARGER BEDROOM, SMALLER CLOSETS



PLAN TO BE UPDATED AS PER REVISED ARCH BACKGROUND AND PREFERRED PLAN OPTION

RENDERINGS REFLECT ROUND COLUMN AS PER ORIGINAL ARCH BACKGROUND. COLUMNS ARE SQUARE AS PER LATEST ARCH BACKGROUND. DESIGN INTENT TO REMAIN AS SHOWN.

GOVERNOR'S SUITE
226 SQM | 2433 SF







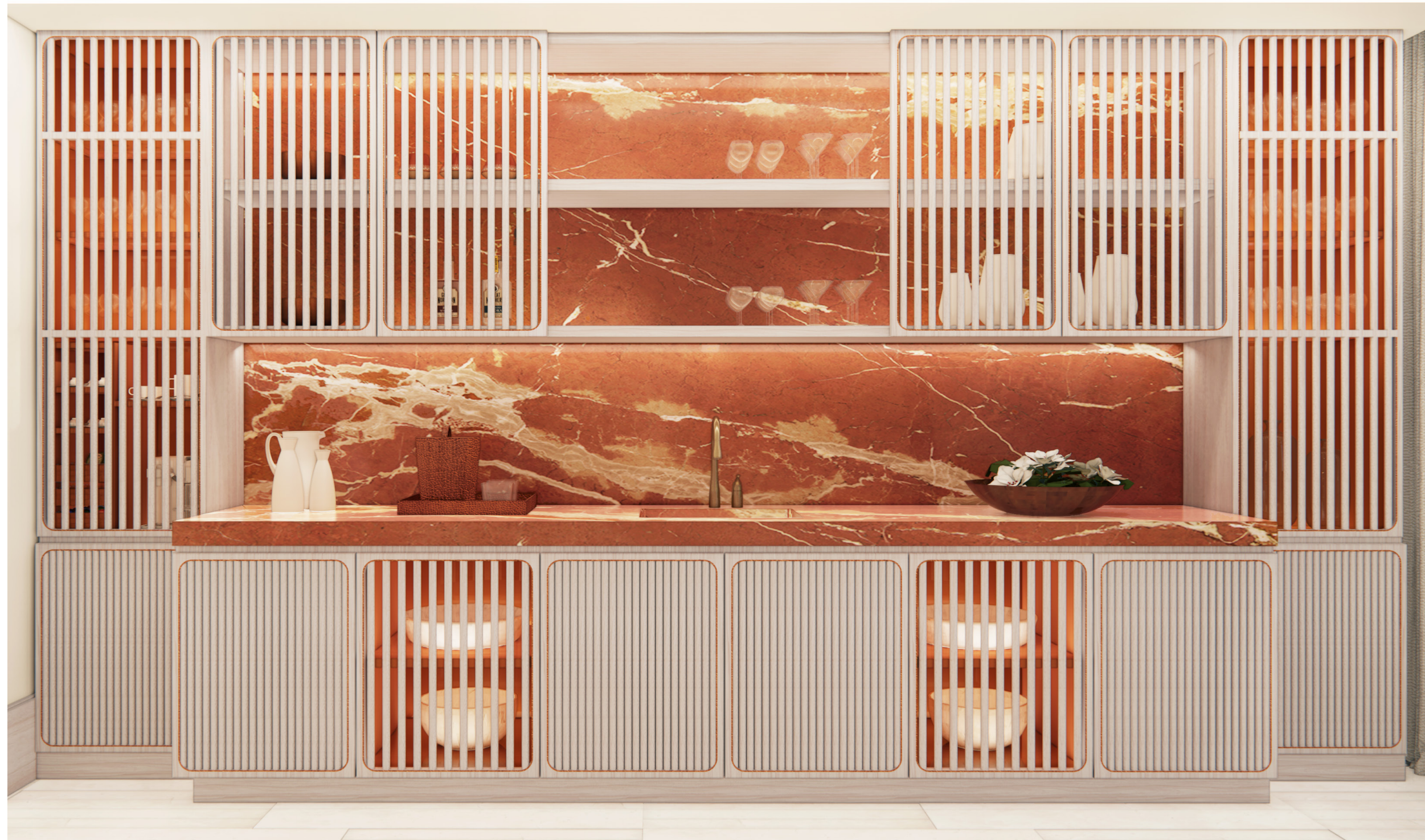


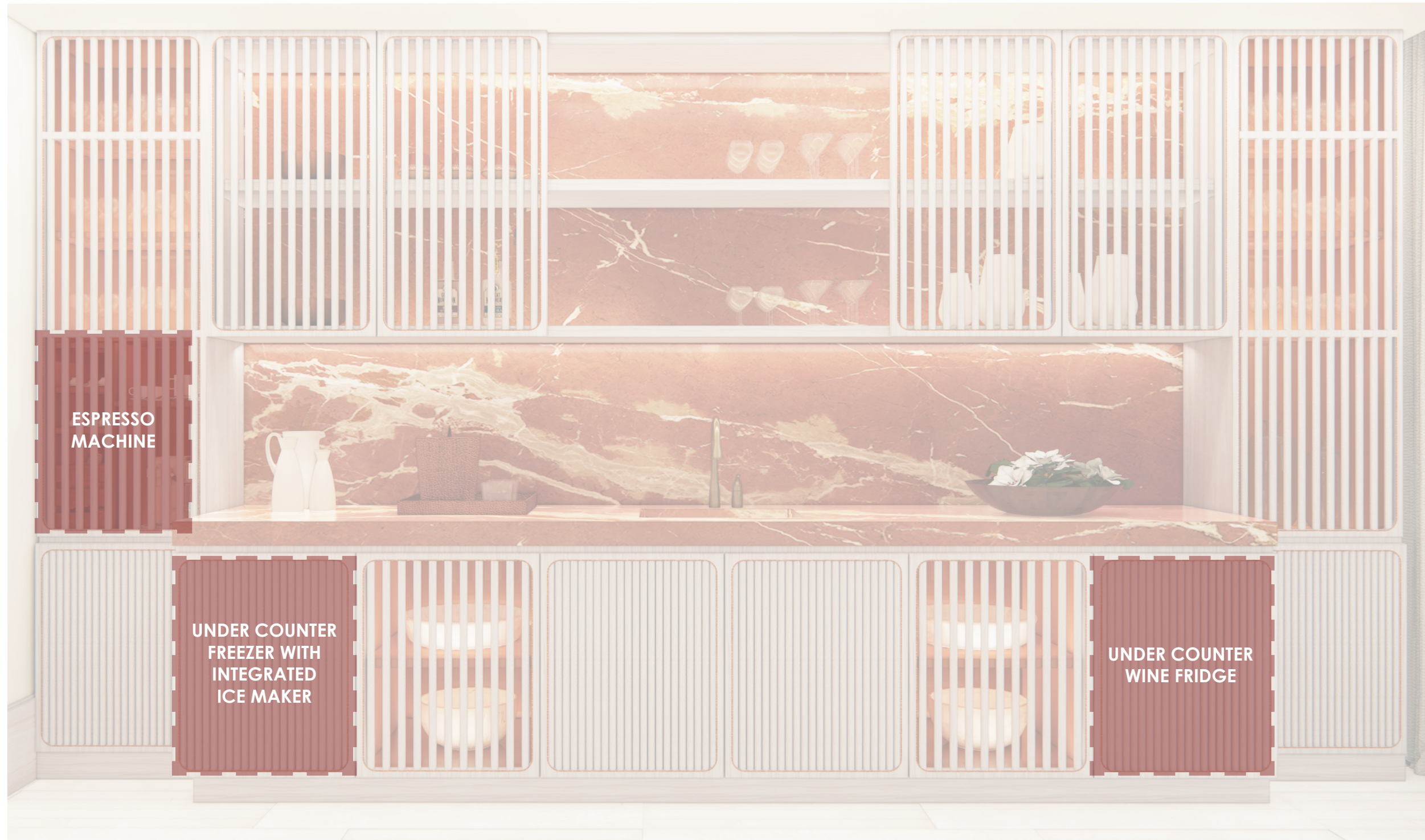
















AMBER COLOR GLASS SINK & BATH TUB



WHITE BASIN SINK & BATHTUB, FEATURE STONE AT SHOWER & W/C









VIE L'VEN - SINT MAARTEN | GOVERNOR'S SUITE | FINISHES PALETTE

TYPICAL WHITE WASHED OAK WOOD
AT WALLS, DOORS & MILLWORK

TYPICAL STAINED OAK WOOD AT
FLOORS, WALLS, DOORS & MILLWORK

TYPICAL NATURAL OAK
WOOD AT FF&E

UPHOLSTERY FABRICS AT FF&E

TYPICAL PLASTER FINISH AT
WALLS & CEILING

TYPICAL 'BURNT ORANGE'
LACQUER FINISH AT MILLWORK

ACCENT STONE AT FF&E

CARPET POMS FOR AREA RUGS

TYPICAL 'BRONZE COLOUR' METAL

FEATURE UPHOLSTERY
AT TV WALL PANELS

BURNT ORANGE BACK PAINTED
GLASS AT FEATURE BAR

'ROSSO ALICANTE' STONE
AT FEATURE BAR

STONE AT MASTER ENSUITE
& POWDER ROOM

STONE AT MASTER ENSUITE
& POWDER ROOM

REEDED GLASS AT ENSUITES

AMBER GLASS BASIN SINK & TUB

TYPICAL 'BRONZE COLOUE' METAL AT
ENSUITES & POWDER ROOM

FEATURE ACCENT STONE IN
FLOOR PATTERN

TYPICAL 'CREMA MARFIL' STONE
FLOORING IN LEATHERED FINISH

TYPICAL TEAK WOOD
AT OUTDOOR FF&E

UPHOLSTERY FABRICS
AT OUTDOOR FF&E



PRESENTED BY

